

An aerial, high-angle photograph of a dense urban landscape at night. The image is filled with numerous skyscrapers and mid-rise buildings, their windows glowing with warm yellow and orange light. The streets below are illuminated by streetlights, showing a grid pattern and some traffic. The overall color palette is dominated by the warm tones of the city lights against the dark night sky.

# KING'S QUEST

BY AVIVA GOLD



## *Log-line*

**The CEO of an Oil Company experiences a personal tragedy and becomes part of a secret plan to convince the world to go green. But his fellow executives have other ideas. Adapted from the modern fable 'The King Who Sang The Song Of The Grandmother' by Aviva Gold.**

## *Genre & Themes*

**KING'S QUEST is a Magical Realist, Eco-Adventure about how what we think is our destroyer can actually be our redeemer. About how the change of heart in one powerful noble soul can change the hearts of multitudes. About how love cracks the most stubborn heart open.**

## *The Setting*

**New Canaan, CT mansion;  
Manhattan, a swank office  
tower; Lapland, Arctic  
Circle; Helsinki, Finland;  
Native American  
Reservation, AZ; Swiss  
Resort. Time September –  
November in the near  
future.**

# Table of Contents

01	Characters
02	Key Facts
03	Synopsis
04	Producer-Writers
05	Cast
06	Mood & Feel
07	References

01

# *the characters*

ALEX GORDON, 48, born into a powerful historic American family; influential, charismatic CEO of an international fossil fuel and water company. Lives in New Canaan, CT, with his wife and two children.

HELENA, 45, Alex's devoted wife, who is secretly interested in esoteric studies and ecology.

MAX, 15, creative son with whom Alex gets impatient.

GRACE, 13, Alex's extroverted, bright daughter.

UNCLE GEORGE, 65, Alex's eccentric uncle, a family outcast, who practices Reiki and astrology. George and Helena are friends and allies, and aware that the fate of the planet depends on Alex's transformation.

OLIVIA, 65, Helena's widowed mother, who was left for adoption by an anonymous Native American woman.

# *the characters (con't)*

GUS GODFREY, 52, Alex's COO. Driven, ruthless, greedy; opposes Alex's altruistic tendencies.

JAKE, 29, night janitor/rapper in Alex's office. Fearless truth teller.

LOUHI AND KARI, a Lapland medicine woman and her husband, who tend to Helena after her near-death plane crash.

EYOTA, an Elder Native American woman who prepares Alex for his 'Earth walk and vision quest'.

ATA, NATIVE AMERICAN WOMAN FROM 1400s, who appears to Alex in his 'vision quest', sings a traditional prayer song that cracks open his heart and transforms his viewpoint on life and business.

INTERNATIONAL BUSINESS CEO'S, including ALEX who regularly meet in Switzerland.

**“The world hangs on a  
thin thread, and that is  
the psyche of man.”**

— *Carl Jung*



<b>Genre</b>	Eco-Adventure
<b>Budget</b>	\$30mil+ USD plus (A-list)
<b>Producer-Writers</b>	Aviva Gold, D.R. Thompson
<b>Based on</b>	The King Who Sang The Song Of The Grandmother
<b>Cast (first choice)</b>	Leonardo DiCaprio, Shailene Woodley
<b>Status</b>	In Development
<b>Key Dates</b>	Principal Photography – 2024 Released – 2025

02

key facts





# 03 *The story*

Kirkenes	528
Nordkapp	197
Luleselv	130
Hammerfest	99





**A**gainst the backdrop of a warming world and other global catastrophes, construction halts at a powerful and wealthy CEO's Connecticut mansion due to the discovery of a Native American sacred site. Alex, notorious CEO of international fossil fuel and water companies, struggles with recent nightmares of the violence against Native Americans, Blacks and nature perpetrated by his ancestors. He feels pressure to reform from all eco activists—but especially wife HELENA—who believe it is Alex's destiny to undergo a heart opening to global needs of nature and all people, and to influence the most powerful businesspeople to do the same at the upcoming annual meeting in Switzerland which Alex will chair. In the meantime, Alex's COO, GUS, tries to convince Alex to agree to his greedy, dark plan to dam the last pristine river in the Southwest.



**At** the same time, Alex—who adores his wife—gives into her pleas for a long-awaited second honeymoon before the upcoming Switzerland meeting. As they are about to take off in their small private jet, Alex must delay for business and insists, against Helena’s objections, that she go ahead, and that he will join her the next day.

That night Alex receives devastating news that her plane has crashed in isolated, inaccessible Arctic territory. A satellite photo indicates no survivors. Alex falls apart, but, unbeknownst to him, a Lapland couple rescues HELENA , barely alive. In their isolated remote hut, a medicine woman tends to Helena with folk medicine, spiritual invocation and psychic insight into Helena’s profound connection to her prominent husband, and how her life (and the life of planet) depends on his transformation.



**Alex**, torn between his loyalty to his line of male ancestors and his grief, is psychically guided by Helena, who teeters between life and death.

In a dream she instructs him to go on a vision quest in Native territory guided by a secret sisterhood of Grandmother Elders who (unknown to Alex) were Helena's teachers. The rest of the story describes Alex's arduous and breathtaking Vision Quest, the psychic communication between Alex and Helena during the quest, the power of their love and Helena's spontaneous healing at the moment that Alex's heart is opened. Alex undergoes a complete transformation—all just in time for his impassioned presentation to World business leaders as they are presented a vision for a better world.





— *WeScreenplay*

**“The theme of this piece is so strong that it could sell it outright if pitched correctly. I could see it going to a streamer or studio.”**





04  
*Producer-Writers*



Aviva Gold MFA, CSW, ATR, Art Medicine Woman, is an artist, author, psychotherapist and facilitator of *Painting From The Source* workshops at healing retreat centers worldwide. Aviva is also a grandmother, yogi, wild dancer, Shaman, gardener and happiest in wilderness. She believes that authentic soul-touching art comes from a divine place deep within and that the ritual of creating and viewing such art is central to individual and planetary healing. Aviva's iconic book *Painting From The Source* was published by Harper Collins worldwide, 1998.

Aviva was featured in the award-winning documentary ***PATHS OF LIFE*** (2020) by Swiss filmmaker Thomas Lüchinger, who tells Aviva's story of personal crisis and transformation as a powerful metaphor for the Hero's Journey.

PRODUCER-WRITER  
*Aviva Gold*



PRODUCER

*D.R. Thompson*



D.R. (Don) Thompson founded nextPix in 2000 with partner Diana Takata. Since then, the company has produced, co-produced or co-funded over twenty-five feature films.

Films produced or co-produced by Thompson have been international success stories, being official selections and winning awards and special recognition at dozens of international film festivals including Sundance, Toronto, Cannes, Berlin, Montreal, and Cinema for Peace.

Thompson's projects include the narrative feature **NED RIFLE** (directed by Hal Hartley and starring Aubrey Plaza), **CLOUDS**, and the Cannes award-winning **YOMEDDINE** (2018), among many others. Don is a member of the Producers Guild of America, Dramatists Guild, and the International Screenwriters' Association.



FESTIVAL DE CANNES







05  
cast





Ben Affleck



Matt Damon



Leonardo DiCaprio

*Potential Cast*

**ALEX**

**(LEAD ROLE)**

# *Potential Cast*

HELENA

(LEAD ROLE)



Cate Blanchette



Shailene Woodley



Julia Roberts



06  
*mood+feel*





# FEEL & TONE

We envision the film as having four essential palettes as shown in Palettes A, B, C, and D that follow. Each palette reflects a particular aspect of the film and contributes to the **tone** and **feel**.

Moreover, we envision the film as being edited and sound designed in a modern fashion, with an experimental soundtrack that is in tune with the film's timeframe.





**PALETTE (A): Manhattan and Connecticut** – *harsh, sterile, sharp focus, and contrast.*



**PALETTE (B): Shaman's Hut** – *warm earth tones, sacred, candlelight, ethnic tapestries and objects.*



**PALETTE (C): Native Reservation** – *soft misty glow, wolf howl, owl calls, flowing water.*



**PALETTE (D): After transformation** – *pastel, soft, clean, warm, flowers, sunlight, feminine, peace, patience.*



# 07 references



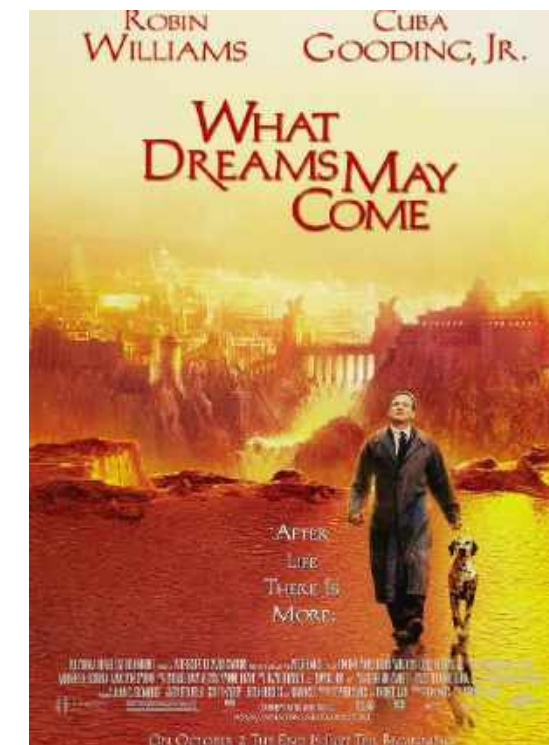
## AVATAR (2009)

Production: USA  
Director: James Cameron  
Actors: Sam Worthington  
Language: English  
Box Office World: \$2.8 bil



## IRON MAN (2008)

Production: USA  
Director: Jon Favreau  
Actors: Robert Downey Jr.  
Language: English  
Box Office World: \$585 mil



## WHAT DREAMS MAY COME (1998)

Production: USA  
Director: Vincent Ward  
Actors: Robin Williams  
Language: English  
Box Office World: \$55 mil



## DUNE (2021)

Production: USA  
Director: Denis Villeneuve  
Actors: Timothee Chalamet  
Language: English  
Box Office World: \$400 mil



**“Nothing is possible without  
love ... for love puts one in a  
mood to risk everything.”**

**— *Carl Jung***









**CONTACT:  
AVIVA GOLD  
520-447-7570  
DON THOMPSON  
240-285-8581**